

Catawba - Wateree System

1200 feet above mean sea level Lake Rhodhiss

 Statesville



Catawba Falls
2,350 feet
above mean sea
level

- River Ch...
- Streams
- Surface
- Basin Ar...
- Populatio...

Lake

Fishing Creek Reservoir

Great Falls Reservoir

Rocky Creek Lake

Lake Wateree

147.5 feet above mean sea level

The Catawba and Wateree Rivers



History of the Catawba River



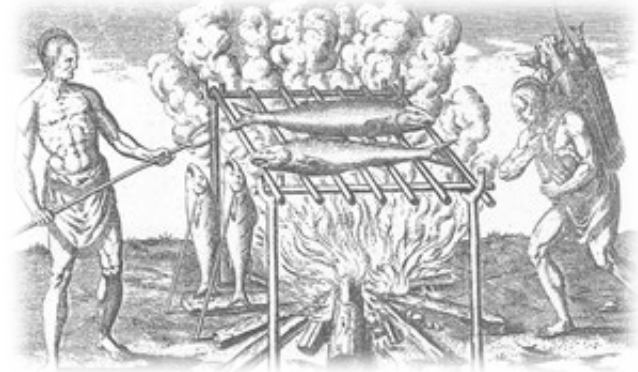
The Catawba River was formed in the same time frame as the Appalachian Mountains about 220 millions years ago during the early Mesozoic – Late Triassic period

Historical Inhabitants of the Catawba

- 12,000 years ago – Paleo Indians inhabited the Americas migrating from northern Asia.



- 6,000 years ago – Paleo Indians migrated south settling along the banks of the Catawba River obtaining much of their sustenance from the river.

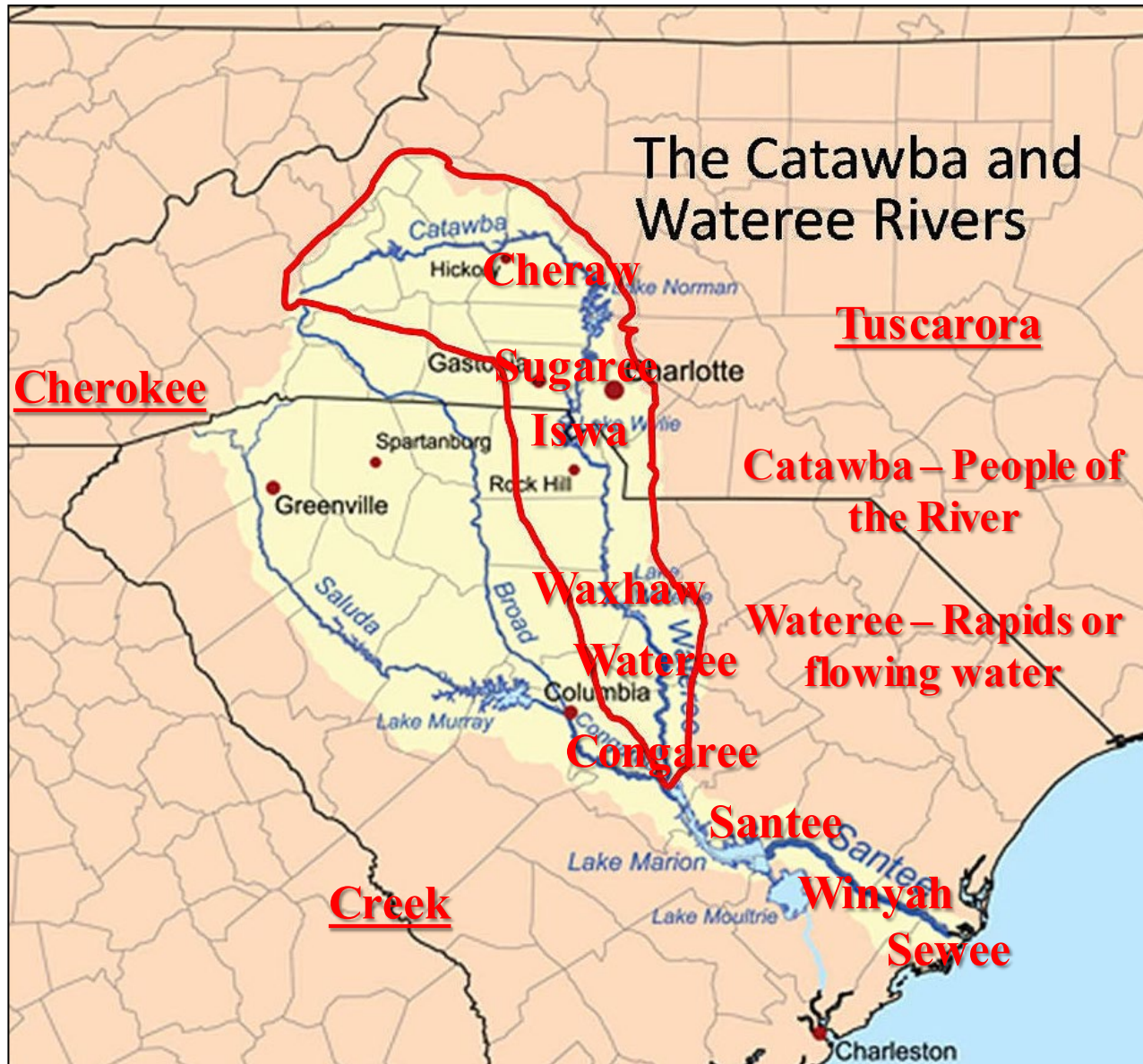


- 1540 – The Spanish explorer Hernando de Soto marched his troops through the Piedmont while heading west looking for gold making first contact with Native Americans in the Catawba Valley.



Native American Tribes Along the Catawba River

Both the Catawba and Wateree Rivers were named for the Native Americans that first settled along their banks.



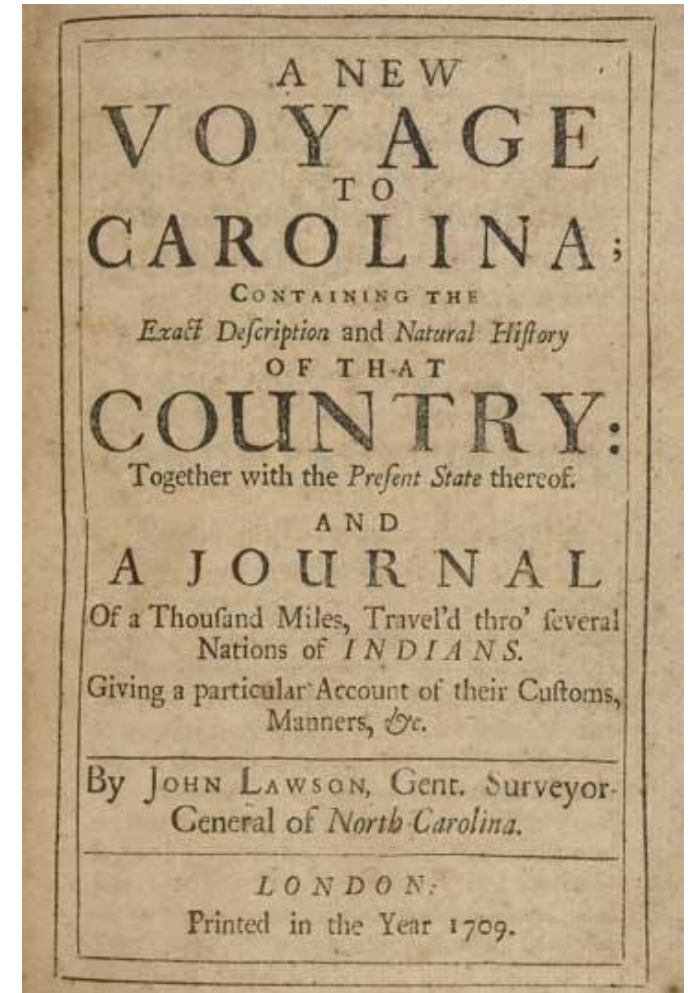
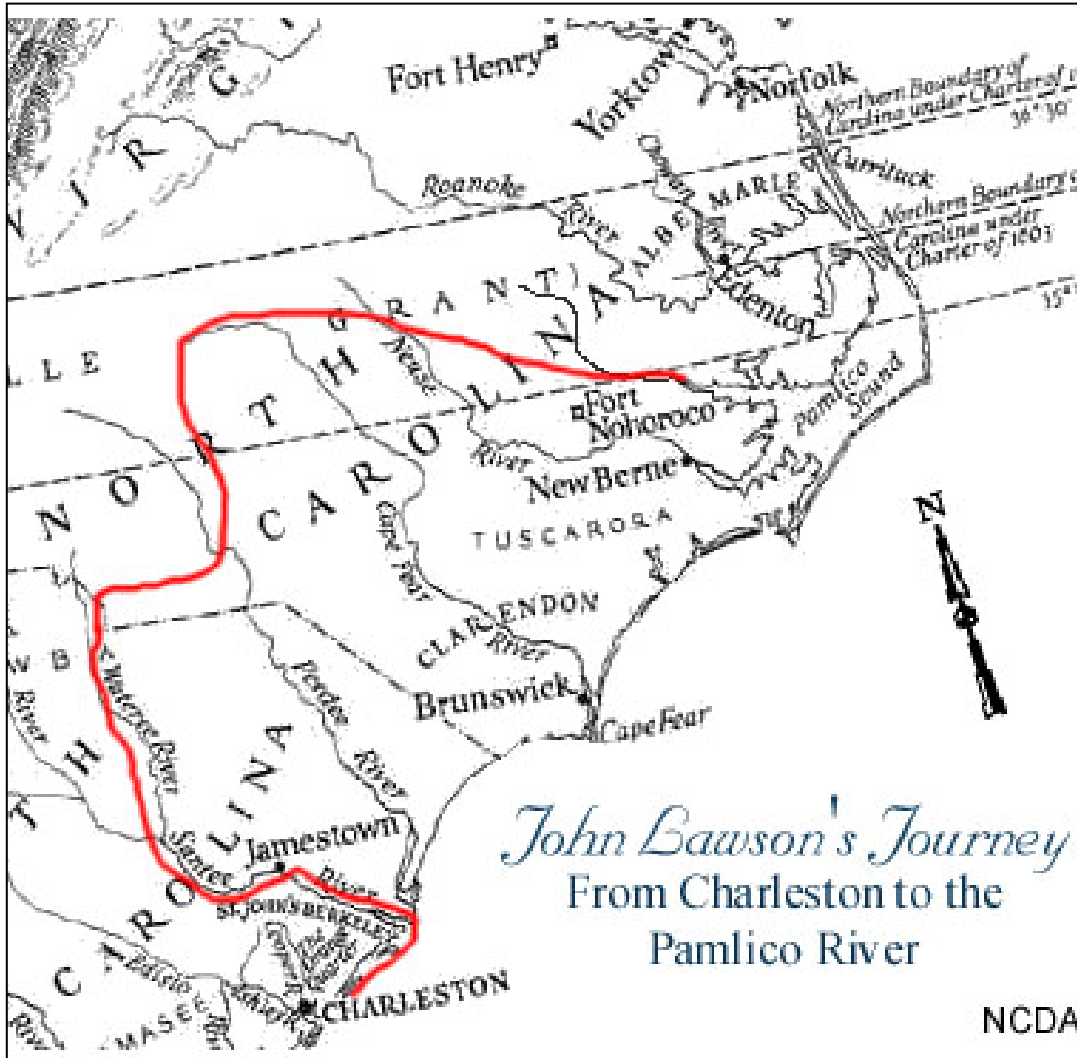
Historical Inhabitants of the Catawba

- 1660 – King Charles II of England established the Carolinas under the rule of 8 Lord Proprietors.
- 1700s – Numerous colonial settlements existed in the Catawba River Valley. Most of the inhabitants were of Scots-Irish and German descent. By 1760, disease spread by these colonists reduced the Native American population to less than 1,000
- 2020 – Population of the Catawba Valley estimated at over 2,000,000, including 3,300 Catawba Indians.

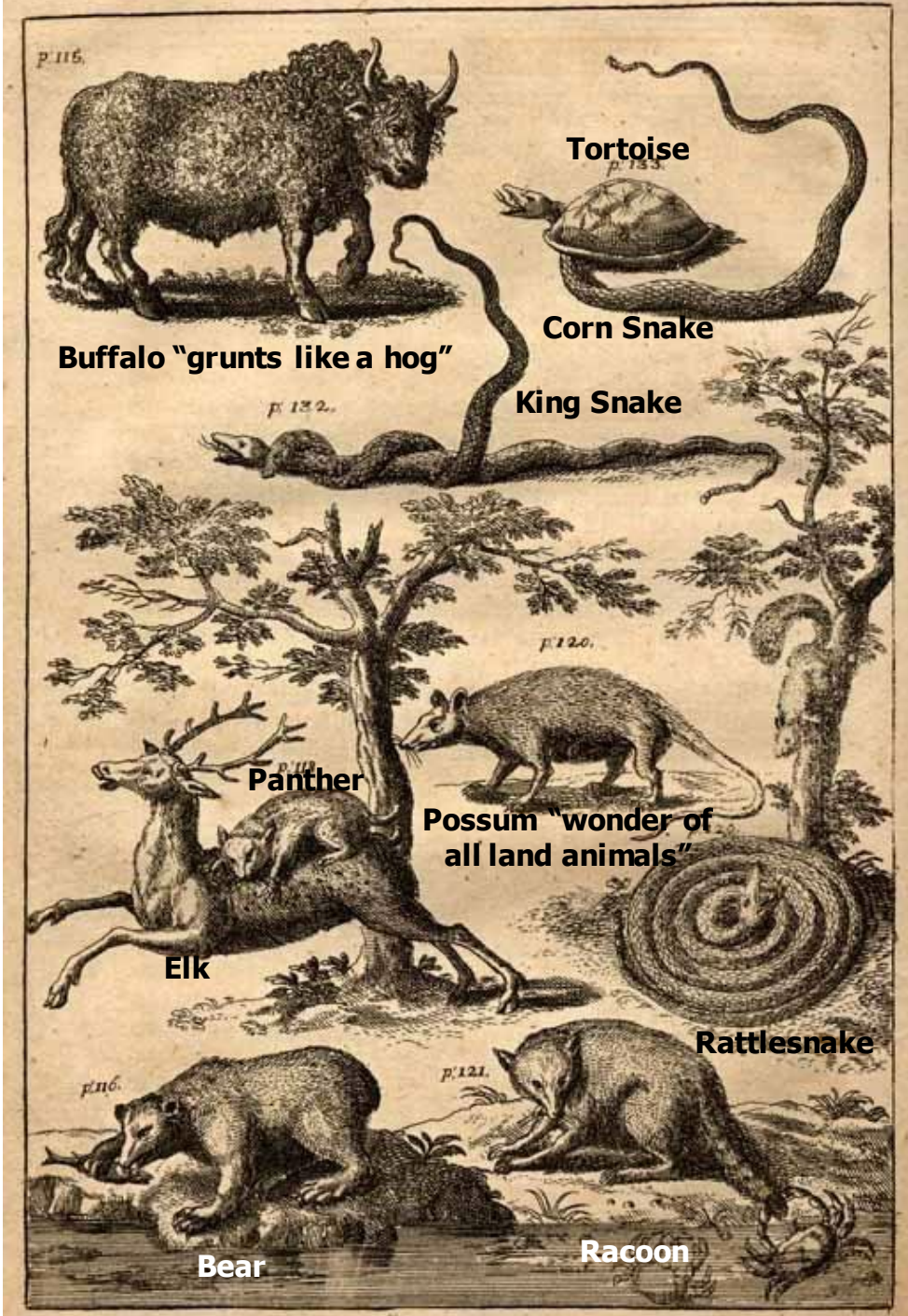


John Lawson (December 28, 1700 to February 24, 1701)

Traveled 550 miles from Charleston, S.C. to Washington, N.C.



Cover of John Lawson's Book – 1709



Animals Documented by John Lawson in his Journal

The Water Mill



Whitley Mill on Long Creek In Charlotte - 1820 to 1919



Fish trapping was one of the earliest commercial enterprises on the Catawba.

Cotton Along the Catawba



Catawba River & Transportation



Flatboats along the Catawba



**Landsford Canal in Chester County,
S.C.**

Spratt Map (1911)

MAP OF MECKLENBURG COUNTY

NORTH CAROLINA

1911

SCALE IN MILES

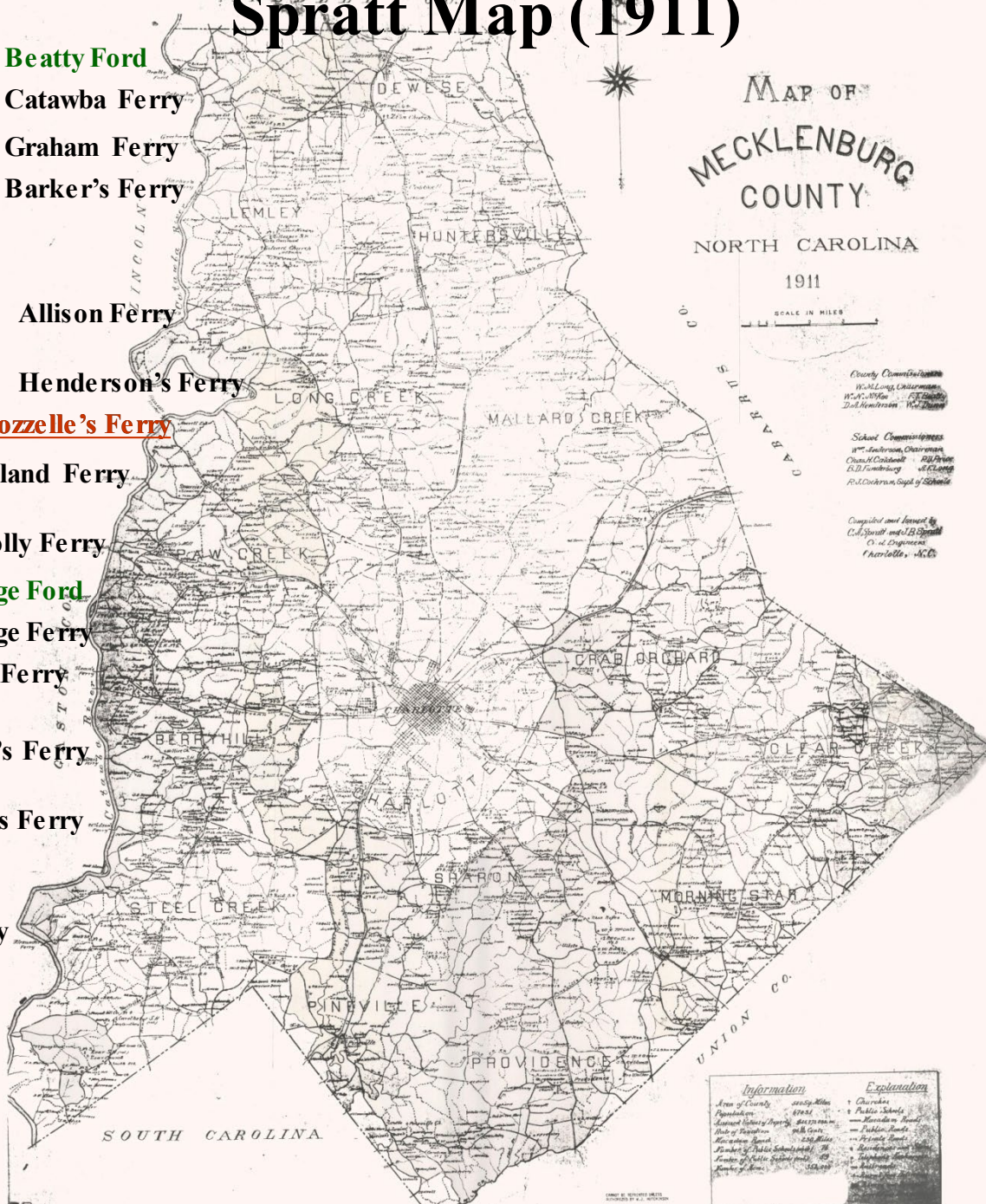
County Commissioners
Wm. Long, Chairman
W. H. W. W. W. W. W. W.
D. H. W. W. W. W. W. W.

School Commissioners
W. W. Anderson, Chairman
O. W. W. W. W. W. W. W. W.
E. D. W. W. W. W. W. W. W.
F. D. W. W. W. W. W. W. W.

Compiled and Issued by
C. S. Spratt and J. B. Spratt
Civil Engineers
Charlotte, N.C.

Information	Explanation
Area of County	211,740 Acres
Population	107,141
Assessed Value of Property	\$21,172,000.00
Value of Personal Property	\$1,100,000.00
Number of Public Schools	100
Number of Public School Pupils	10,000
Number of Acres	10,000
Churches	100
Public Schools	100
Municipal Bonds	100
Public Bonds	100
Private Bonds	100
Deeds and Mortgages	100
Wills and Probates	100

- Beatty Ford
- Catawba Ferry
- Graham Ferry
- Barker's Ferry
- Allison Ferry
- Henderson's Ferry
- Rozelle's Ferry
- Mountain Island Ferry
- Mount Holly Ferry
- Tuckasee Ford
- Tuckasee Ferry
- Sloan's Ferry
- Walker's Ferry
- Wilson's Ferry
- Alexander Ferry



PRINTED BY J. B. SPRATT
UNIONVILLE, N. C.

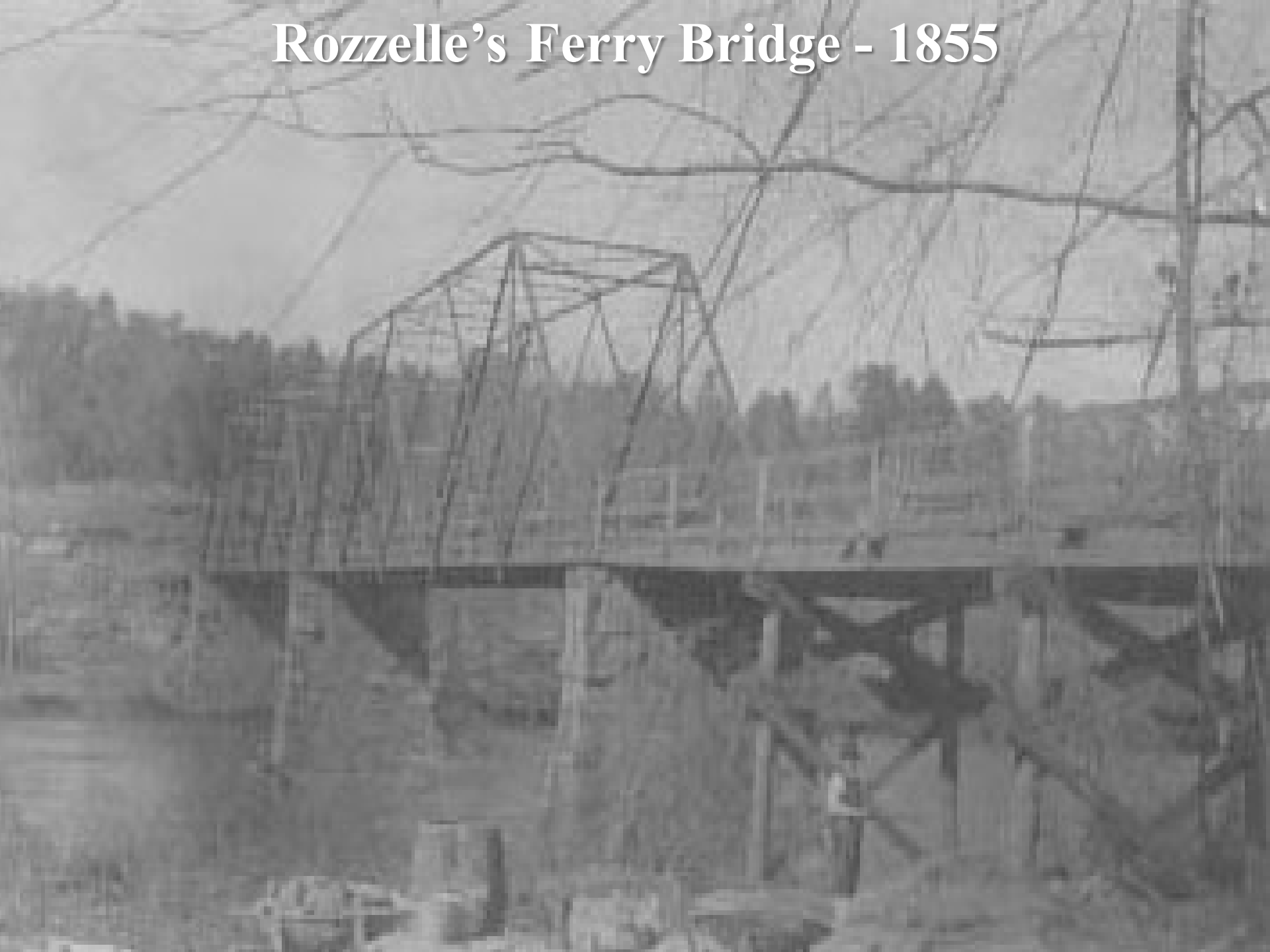
Rozzelle's Ferry on the Catawba River



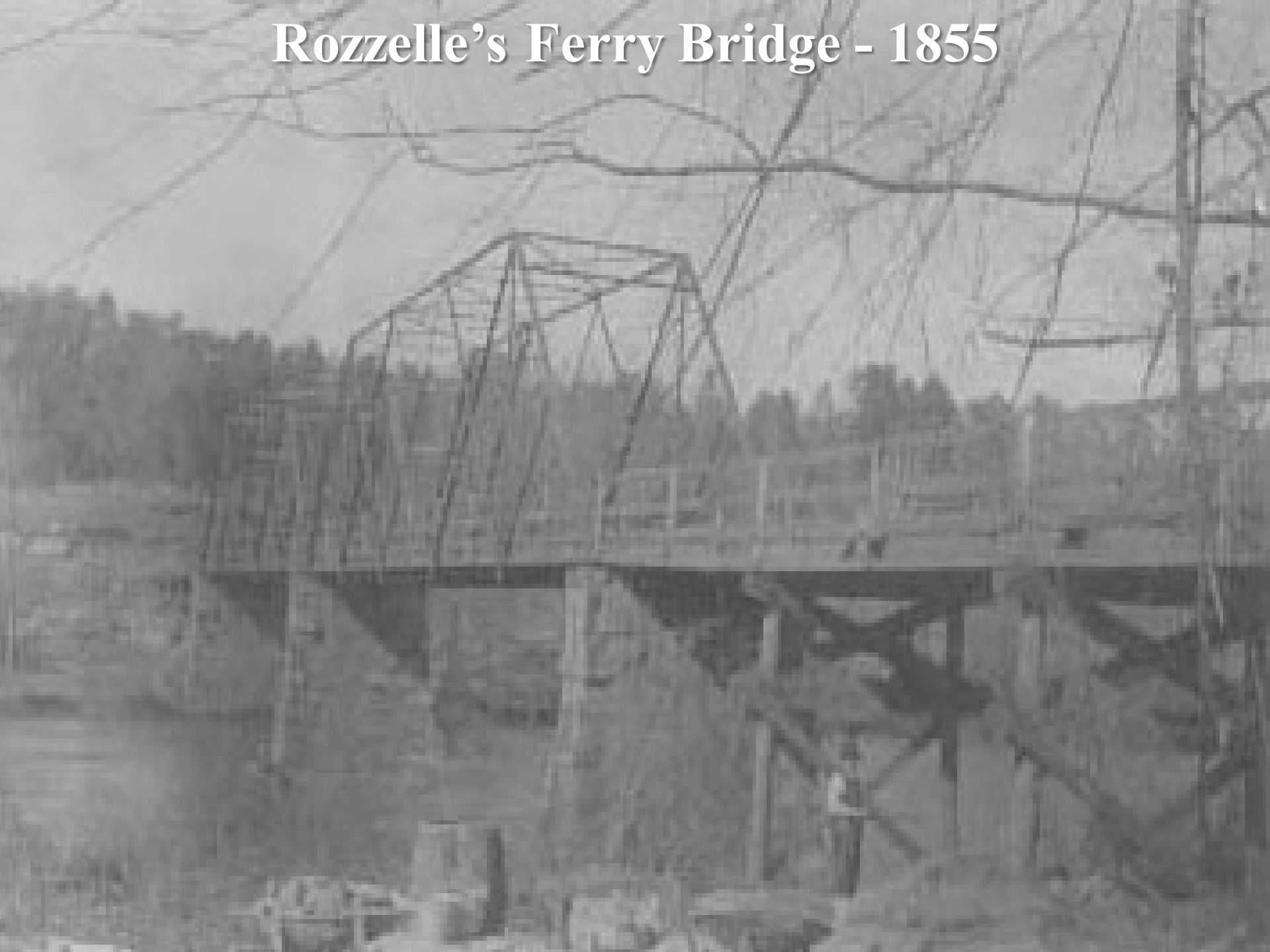
Every Animal on Foot..... 73 ¢

For Exhibitions

Rozzelle's Ferry Bridge - 1855



Rozzelle's Ferry Bridge - 1855



Battle at Rozzelle's Ferry



April 18, 1865

Rozzelle's Ferry Bridge - 1910





Great Catawba River Flood of 1916

Ella Rozzelle Hart 1890 – 1986 (recorded in July 1984):

Terrible time. I'll never forget.

We saw rocking chairs and things going down. Terrible looking.

I went home and went to bed.

Your daddy (Rusty's great grandfather), Ella, Aunt Laura saw the bridge go down.

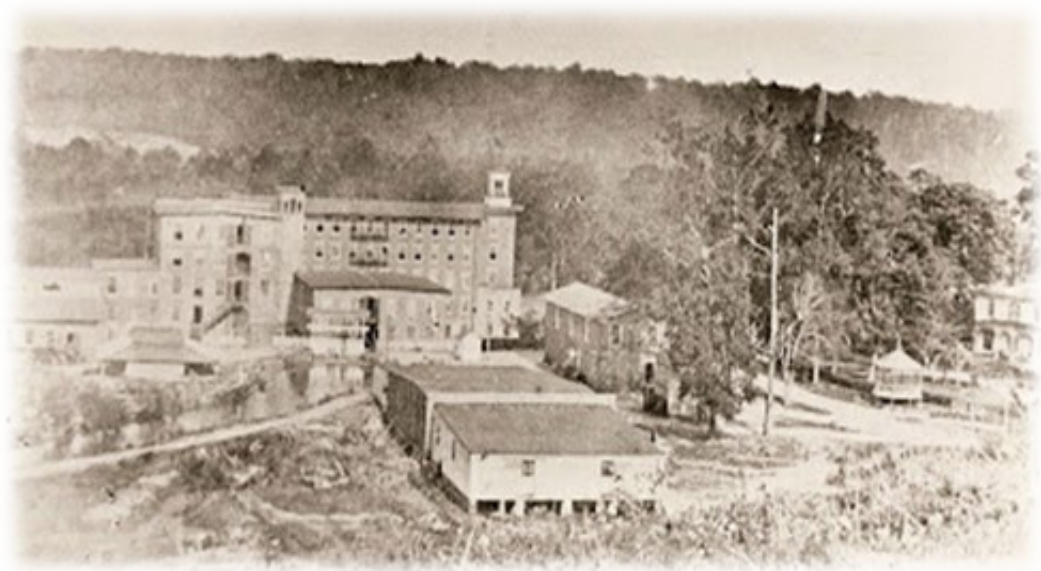
I was in the bed close by the window and your daddy came by and said "Ella the bridge is gone."

It was like somebody had died. Sad Times.

Saw a house go down (the river) with a woman sitting on the porch crocheting.

The Cotton Mill

After the Civil War, the Catawba River Valley grew tremendously as it developed its textile manufacturing industry.



Mountain Island Mill, first mill in Gaston County, 1916

Most mill workers lived in homes provided by the company in close proximity to the mill in what came to be called the Mill Village.



Loray Mill & Mill Village, Gaston County, 1919

Where did it all begin?



Niagara Falls Hydro Station - 1895

1. Lake James, Marion, N.C. – Completed in 1919

Named for James Buchanan (Buck) Duke, the founder of Duke Power



2. Lake Rhodhiss, Morganton, N.C. – Completed in 1925

Named for John Rhodes and George Hiss who partnered to built a cotton mill at the site



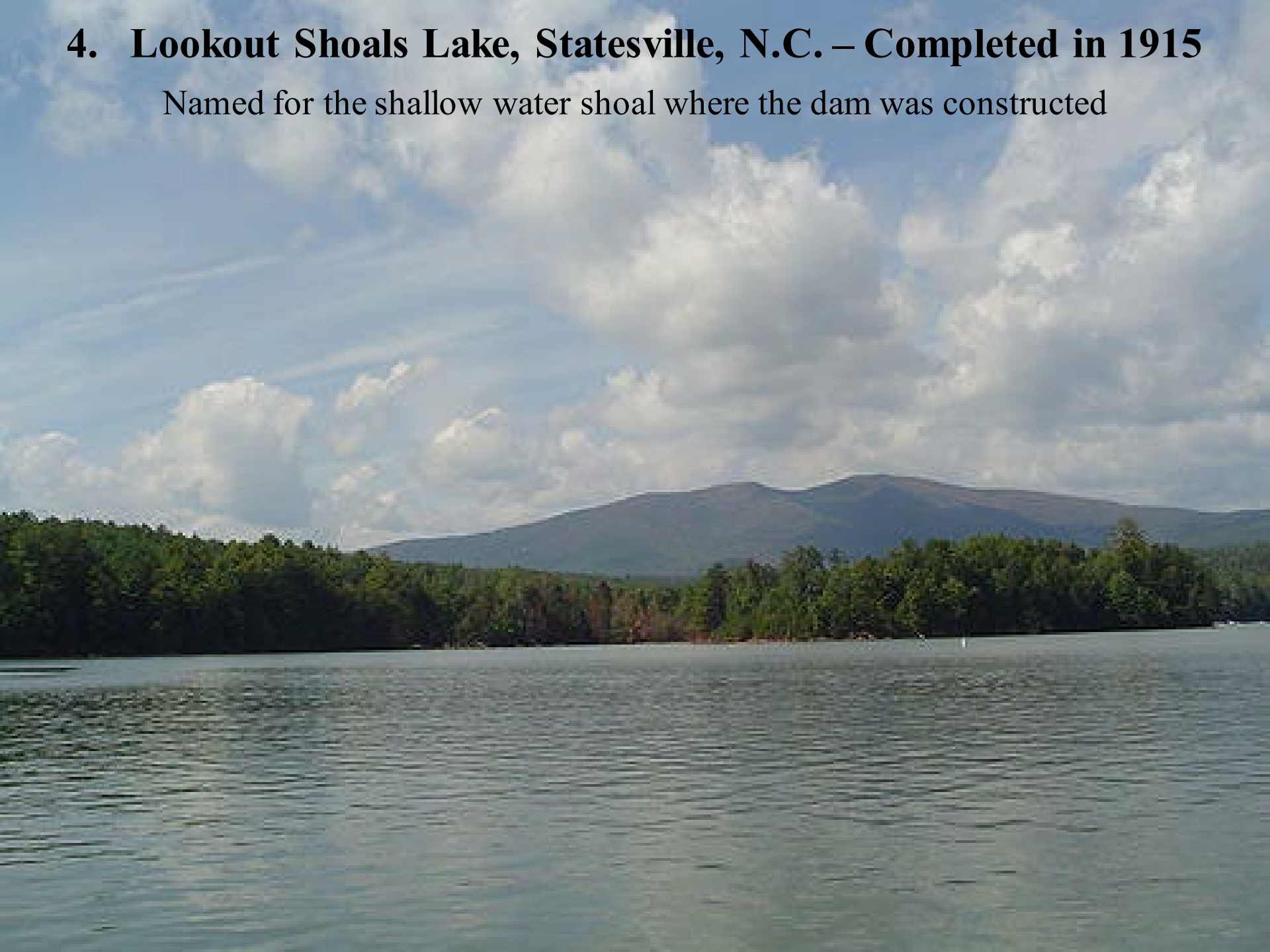
3. Lake Hickory, Hickory, N.C. – Completed in 1928

Named for nearby City of Hickory



4. Lookout Shoals Lake, Statesville, N.C. – Completed in 1915

Named for the shallow water shoal where the dam was constructed



5. Lake Norman, Cornelius, N.C. – Completed in 1963

Named after former Duke Power president Norman Cocks



Construction of Cowans Ford Dam



6. Mountain Island Lake, Mount Holly, N.C. – Completed in 1924

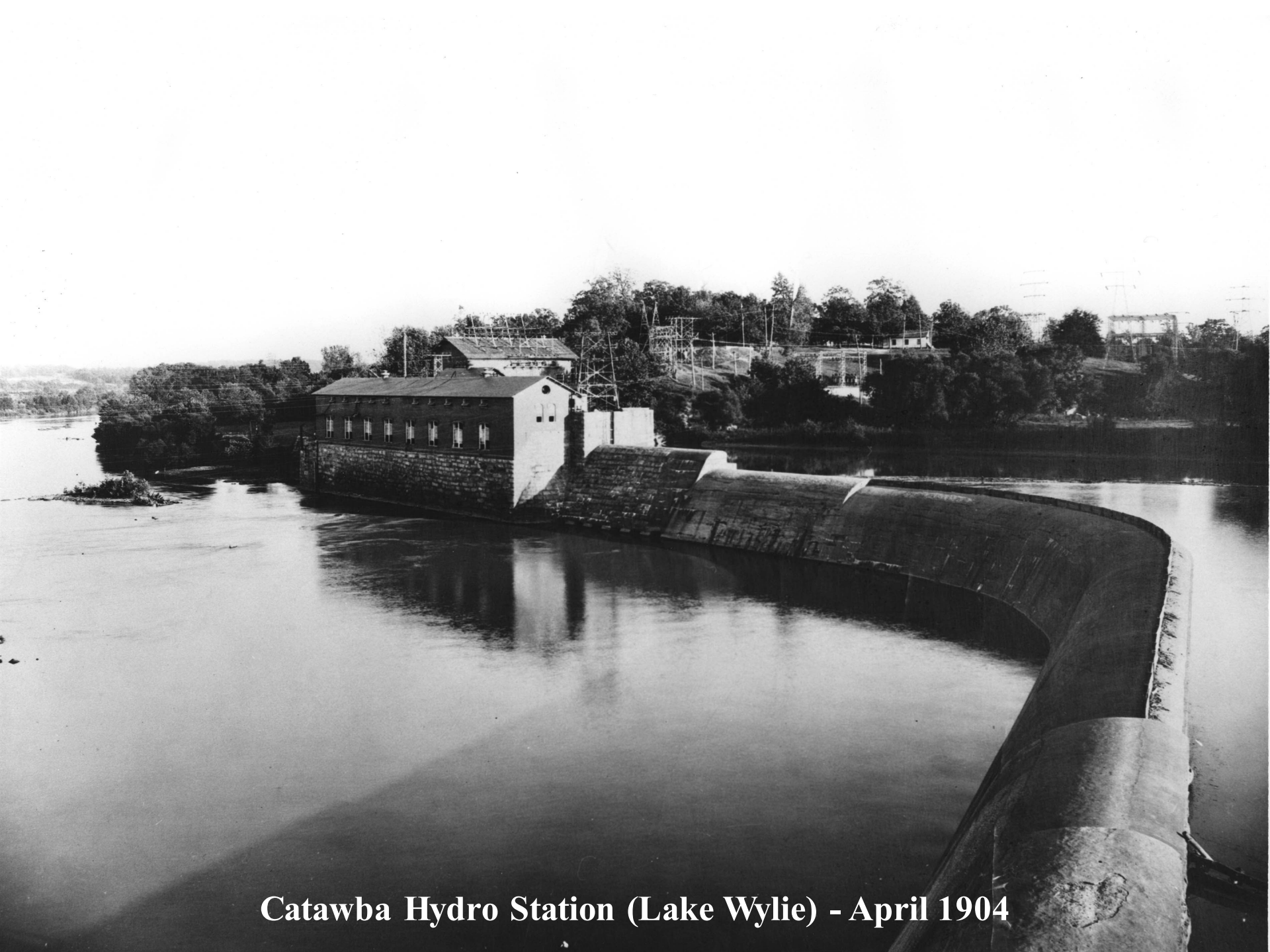
Named for the island in the middle of the river



7. Lake Wylie, Fort Mill, S.C. – Completed in 1904 & expanded in 1925

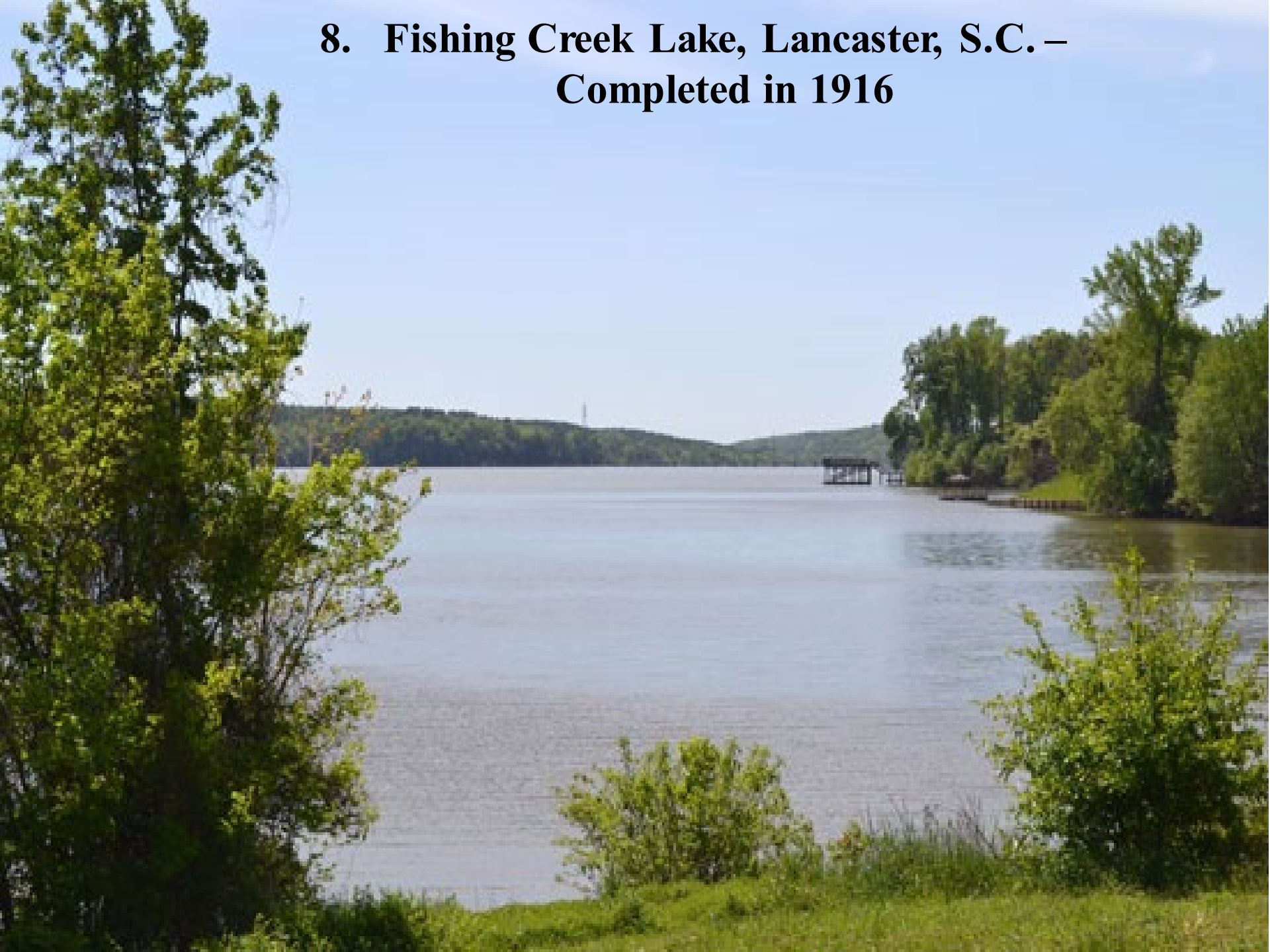
Named for Dr. Walker Gill Wylie who constructed the original dam





Catawba Hydro Station (Lake Wylie) - April 1904

**8. Fishing Creek Lake, Lancaster, S.C. –
Completed in 1916**



9. **Great Falls Lake, Town of Great Falls, S.C. – Completed in 1907**

Named for the Great Falls of the Catawba River where the lake is located

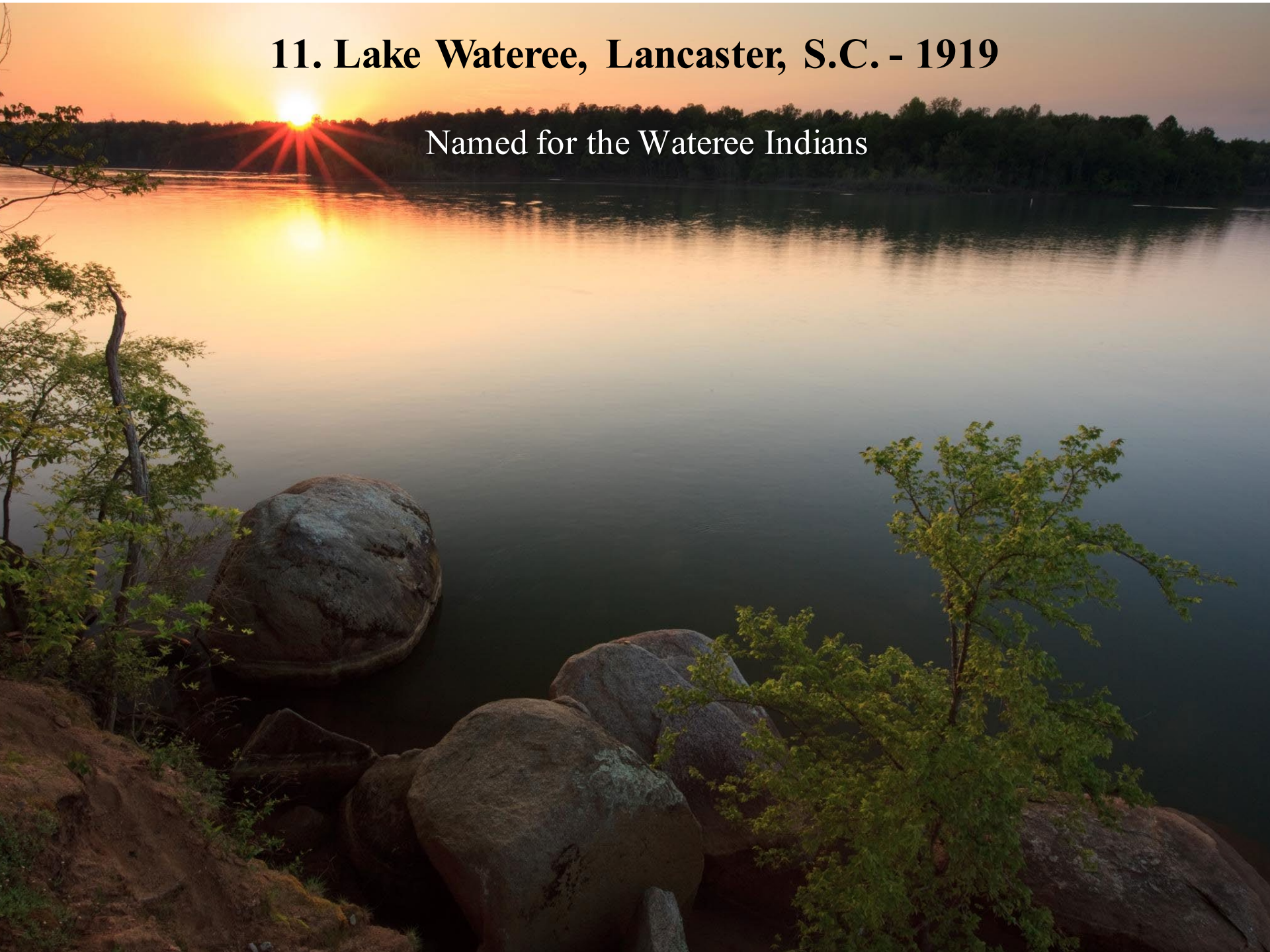


10. Cedar Creek Lake, Chester, S.C. – Completed in 1909



11. Lake Wateree, Lancaster, S.C. - 1919

Named for the Wateree Indians

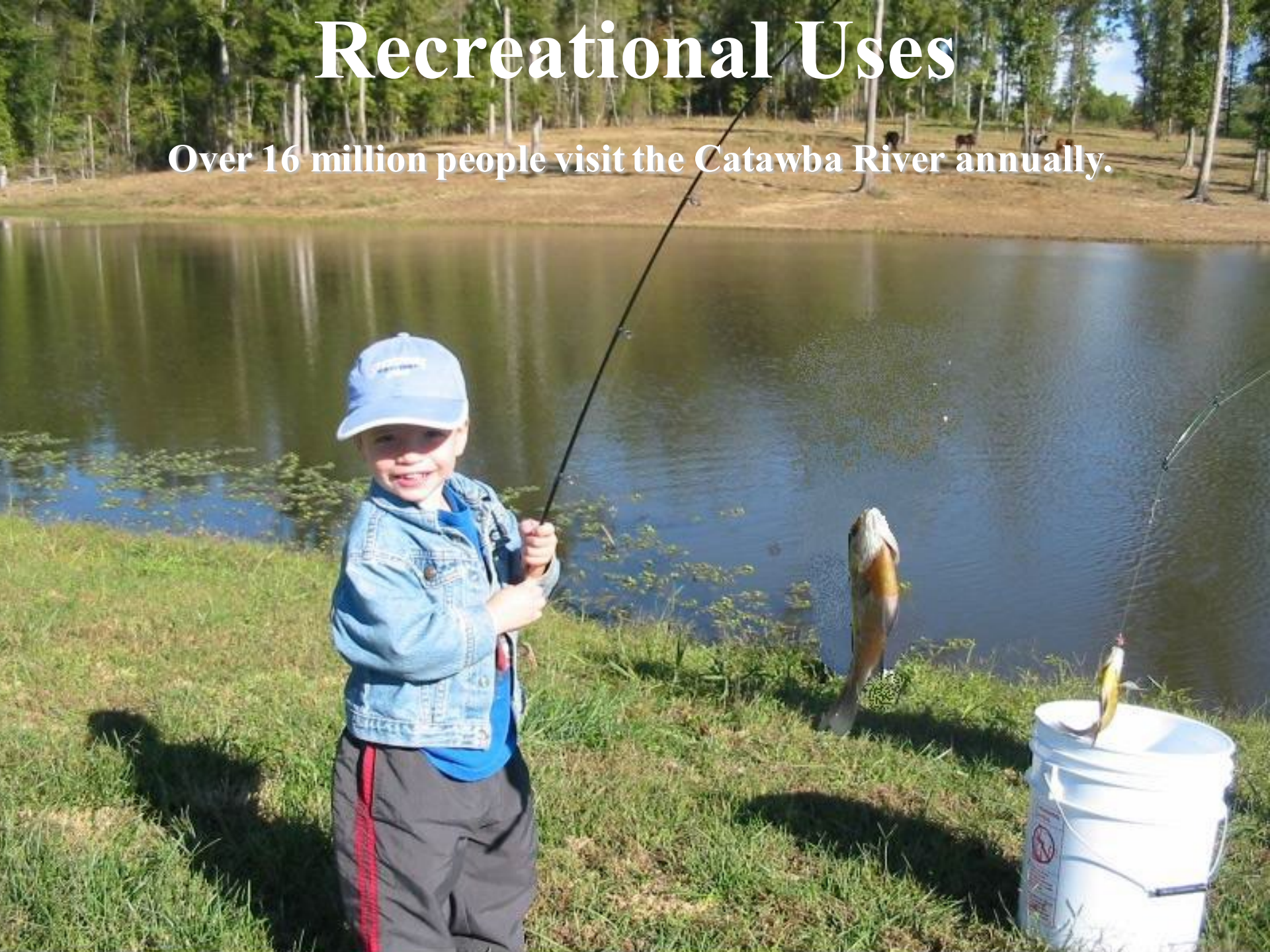




The amount of water drawn from the Catawba River and its tributaries everyday would fill Panther Stadium 2.5 times.

Recreational Uses

Over 16 million people visit the Catawba River annually.



Visitation is projected to increase by about 11 percent per decade through 2050.



Catawba-Wateree Hydro Stations



- Hydro stations provide enough electricity to power 103,000 homes.
- The lakes associated with these hydro stations provide critically needed cooling water for nuclear plants and fossil fuel plants that fulfill the remainder of our electric power needs.

Our surface water resources have shaped our past, sustain us in the present and will dictate our future. The communities we have developed can be sustained only if we learn to appreciate the value of our water resources and commit ourselves wholeheartedly to their protection.

Lake James at the headwaters of the Catawba

An aerial photograph of the Lake Wylie Dam in South Carolina. The dam is a large concrete structure with a spillway, situated on a river. The water is a deep blue-green color. The surrounding landscape is a mix of dense green forest and areas with bare, brown trees, suggesting a late autumn or winter setting. In the background, there are rolling hills and a small town with buildings and a church steeple. The sky is overcast with grey clouds. The word "Questions?" is written in a large, white, serif font across the center of the image.

Questions?

Lake Wylie Dam, South Carolina