



Ripple Effects

Water for All Summit



The background of the entire slide is a close-up photograph of water ripples. The ripples are concentric circles of varying sizes, creating a textured, wavy pattern. The colors are shades of light blue and white, with the white highlights catching the light and creating a shimmering effect. The ripples are most prominent in the center and right side of the image, fading slightly towards the left.

Welcome to Mooresville

Mayor Chris Carney, Town of Mooresville

The background of the slide features a close-up, high-angle shot of water with several sets of concentric ripples. The ripples are most prominent on the right side, where they are larger and more detailed, showing the texture of the water's surface. The overall color palette is a range of blues, from light, airy tones to deeper, more saturated hues, creating a calm and reflective atmosphere.

Year-in-Review

Jimmy Bagley, CWWMG Chair

About CWWMG

Mission

To collectively identify, fund, and implement strategic initiatives that extend the capacity of the Catawba-Wataeree River to effectively serve the community, while protecting and enhancing the ecological health of the basin.

Updated Draft

Membership

- ◆ Catawba River Water Supply Project
 - ◆ Lancaster County Water & Sewer District (SC)
 - ◆ Union County (NC)
- ◆ Chester Metropolitan District (SC)
- ◆ City of Hickory (NC)
- ◆ City of Belmont (NC)
- ◆ City of Camden (SC)
- ◆ Charlotte Water (NC)
- ◆ City of Concord (NC)
- ◆ City of Gastonia, Two Rivers Utilities (NC)
- ◆ City of Lenoir (NC)
- ◆ City of Morganton (NC)
- ◆ City of Tega Cay (SC)
- ◆ City of Mount Holly (NC)
- ◆ City of Rock Hill (SC)
- ◆ City of Statesville (NC)
- ◆ Duke Energy Carolinas, LLC
- ◆ Lincoln County (NC)
- ◆ Lugoff-Elgin Water Authority (SC)
- ◆ Town of Granite Falls (NC)
- ◆ Town of Mooresville (NC)
- ◆ Town of Valdese (NC)

July 2003

Duke Energy and stakeholders begin process to relicense the Catawba-Wateree Project (FERC Project No. 2232)

Dec 6, 2007

Catawba-Wateree Water Management Group Officially Formed

2009

City of Statesville joins

2011

Town of Mooresville joins

Nov 2015

40-yr New License issued by FERC

Jan 2018

FERC approves all New License amendments

2008

Town of Longview joins

2010

SC v. NC US Supreme Court Case settled largely by compliance with CRA

2017

The first Water for All Summit was held

Summer 2006

70 parties sign binding Comprehensive Relicensing Agreement (CRA)

2014

Water Supply Master Plan

2019

The inaugural Citizens' Water Academy was launched

Our Board



Chair
Jimmy Bagley, PE
City of Rock Hill, SC



Vice Chair
Jeff Lineberger, PE
Duke Energy Carolinas, LLC



Secretary/Treasurer
Ron Hargrove
City of Charlotte, NC



NC At-Large Director
Allison Kraft, PE
Town of Mooresville, NC



SC At-Large Director
Brad Bucy, PE
Lancaster County Water
& Sewer District, SC

Advisory Committee



Environment
Vicki Taylor (*Chair*)



Academic/Research
Calvin Sawyer, PhD



Residential Landowner
Shirley Greene



**Economic
Development**
Robert Long, CEcD



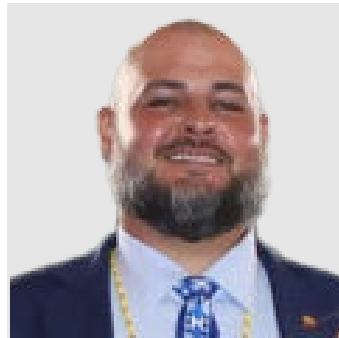
**Regulatory
/State Government**
Ryan Carter



Industrial/Business
Wesley Wightman, PE



Recreation
Tim Gestwicki



Discretionary Seat
Connie Wade



Local Government
Eleanor Mixon



Agricultural/Forestry
Mitch Peele



Agricultural/Forestry
Keith Larick

Our Vision

We envision a future with a sustainable water source achieved through proactive planning, cutting edge research, and water shortage preparedness.



**Integrated Water
Resources Plan**



**Research and
Technical**



**Education and
Awareness**



INTEGRATED WATER RESOURCES PLAN

Practical Solutions for a Sustainable Future

01

January - December 2021

Basis of Planning

02

January - December 2022

Model Updates &
Stakeholder
Communications

03

January - December 2023

Evaluations,
Recommendations &
Communications

04

January - December 2024

Final
Recommendations

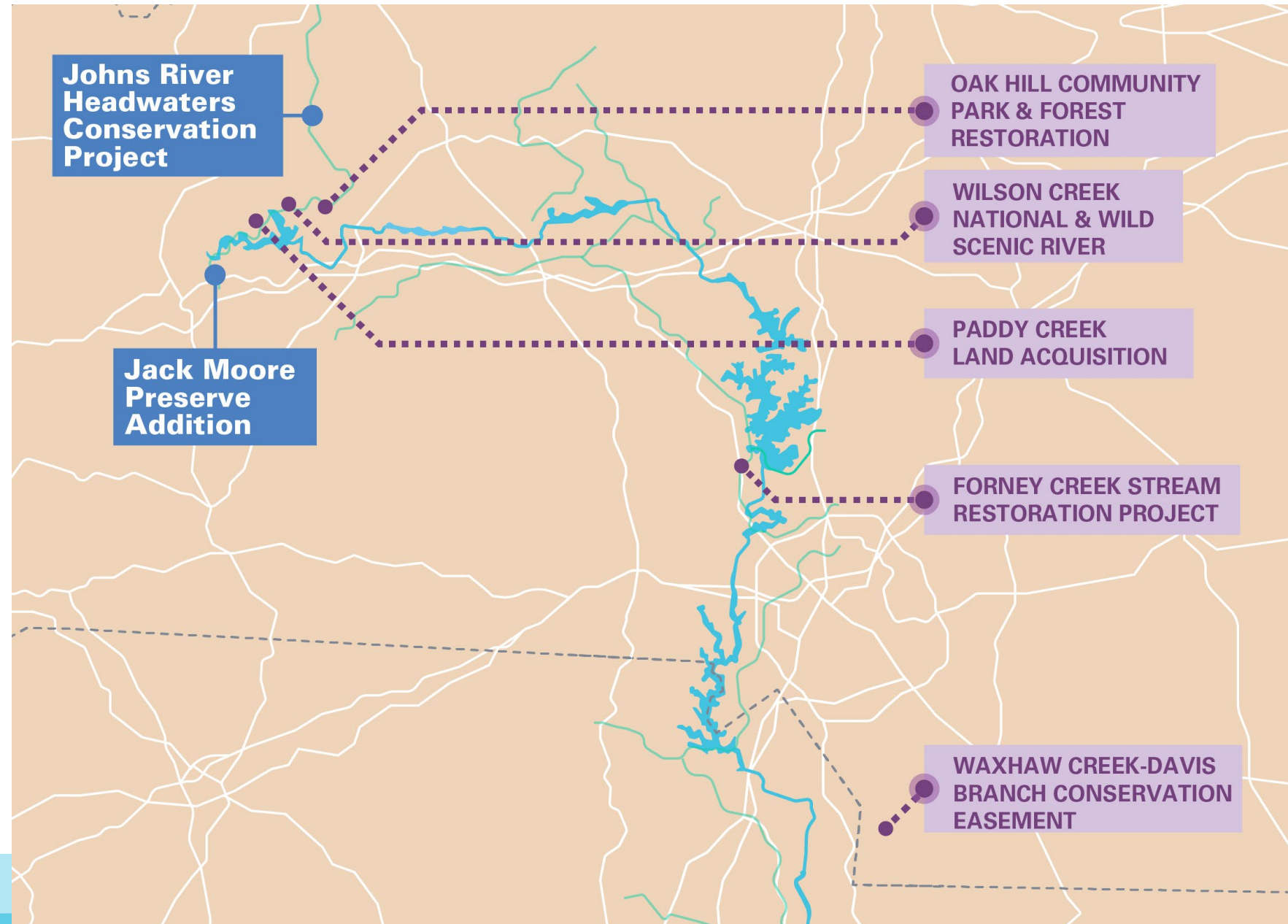
05

January - December 2025

IWRP Production &
Rollout

Source Water Protection Investments

- **Forney Creek Stream Restoration Project**
| Catawba Lands Conservancy
- **Paddy Creek Land Acquisition**
| Foothills Conservancy of North Carolina
- **Oak Hill Community Park & Forest Restoration**
| Foothills Conservancy of North Carolina
- **Wilson Creek National and Wild Scenic River**
| Foothills Conservancy of North Carolina
- **Waxhaw Creek-Davis Branch Conservation Easement**
| Catawba Lands Conservancy



2025 Citizens' Water Academy



Academy Schedule

Introduction to the Basin

Saturday, January 25
Quest Nature Center,
Huntersville, NC

Duke Energy's Role in the River

Thursday, February 6
Virtual Session

Water Utility Operations

Saturday, February 22
City of Hickory Water
Treatment Facility
Hickory, NC

Land Use Impacts on Water Quality

Thursday, March 6
Virtual Session

Integrated Water Resources Plan

Thursday, March 20
Virtual Session

History of the Catawba

Saturday, February 1
Catawba Cultural
Center, Rock Hill, SC
Hybrid Session

Storm Water Challenges - Who's in Charge of Water Quality

Thursday, February 13
Virtual Session

Local Advocates

Thursday, February 27
Catawba Riverkeeper
Headquarters,
McAdenville, NC
Hybrid

Recreation and Development in the Catawba

Thursday, March 13
Virtual Session

Citizens Water Academy 2025 Graduates

Daniel Austin

Mecklenburg Soil & Water

Rocio Bell

Charlotte Water

Michelle Bradley

Charlotte Water

Alexandra Buckley

Charlotte Water

Harold Cline

Charlotte Water

Natalie Curry

City of Kannapolis

Jenn Dunn

Catawba Riverkeeper

Brian Fulk

Lancaster County

Anna Gionfriddo

Brown and Caldwell

Hank Guess

City of Hickory

Maya Holcomb

NC Dept. of Environmental Quality

Stephanie Hunsinger

Lake Wateree Association

Scott Hunsinger

Lake Wateree Association

Amanda Kinniburgh

Charlotte Water

Raina Lenear

Charlotte Water

Ed Lindsey

Resident

Antonio Maturo

City of Tega Cay

Anthony Meadows

Charlotte Water

Nicky Milde

Charlotte Water

Jeff Parkey

Santee-Lynches Regional Council of
Governments

McLayne Reese

Charlotte Water

Ellie Riggs

Catawba Riverkeeper

Christine Robbins

Charlotte Water

Cara Rusmisell

Charlotte Water

Sheldon Russell

City of Tega Cay

Olivia Salazar

City of Kannapolis

Jennings Storie

Catawba Riverkeeper

Charles Thach

City of Charlotte

Marica Thomas

NC Dept. of Environmental Quality

Ray Webber

Lake Wylie Marine Commission

Thomas Zappelli

EnergyTech Advisors

Guess that Species

This activity invites you to explore and identify aquatic plants and animals found in the Catawba-Wateree Basin. Our goal is to help you recognize both invasive and native species and learn about techniques to manage invasive species.

Throughout the day, your goal is to look in the fishbowls in the middle of the tables and guess the common name, and if it is invasive or native.

Start at your table and then travel to other tables marked with the same color (1-5) and try to guess all 5 species centerpieces. Record your answers on this score card.

Answers will be revealed at the end of the Summit.
The winning Scorecard will a prize!

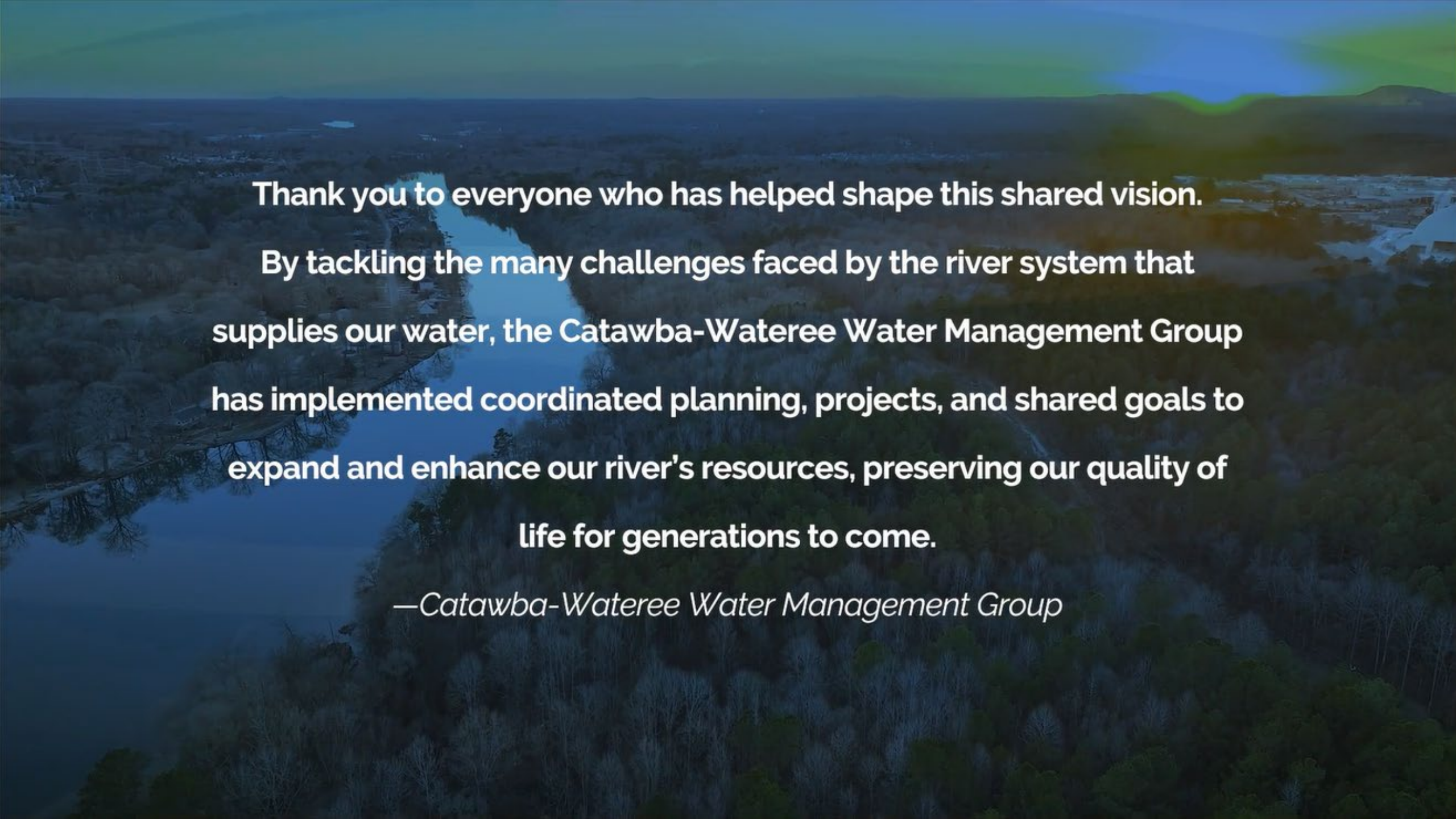
Don't forget to visit the bonus table for extra points.

Happy guessing!



CATAWBA
WATEREE
WATER MANAGEMENT GROUP
PROTECT • SERVE • SUSTAIN
Stewards of the Catawba-Wateree River

THE HISTORY OF OUR FORMATION

An aerial photograph of a river winding through a vast, dense forest. The river is a light blue-grey color, contrasting with the dark green of the surrounding trees. The forest appears to be a mix of deciduous and coniferous trees. In the distance, the river continues to flow, and some distant hills or mountains are visible under a clear sky. The overall scene is serene and natural.

Thank you to everyone who has helped shape this shared vision.

By tackling the many challenges faced by the river system that supplies our water, the Catawba-Wateree Water Management Group has implemented coordinated planning, projects, and shared goals to expand and enhance our river's resources, preserving our quality of life for generations to come.

—Catawba-Wateree Water Management Group

The background of the slide features a close-up, high-angle view of water ripples. The ripples are concentric circles of varying sizes, creating a textured, organic pattern. The colors are shades of light blue and white, with the ripples catching the light to create bright highlights and soft shadows. The overall effect is calm and fluid.

State of the Basin




Jeff Lineberger, CWWMG Vice-Chair

State of the Basin

Area of detail ●

Map Legend



-  Catawba-Wateree River Basin
-  Main Riverine System
-  State Border



Hardest Working River in America?

Approximately 2 million people get water from the mainstem river/lake system.



Dozens of public water suppliers



12 hydropower stations



5 nuclear & fossil power stations



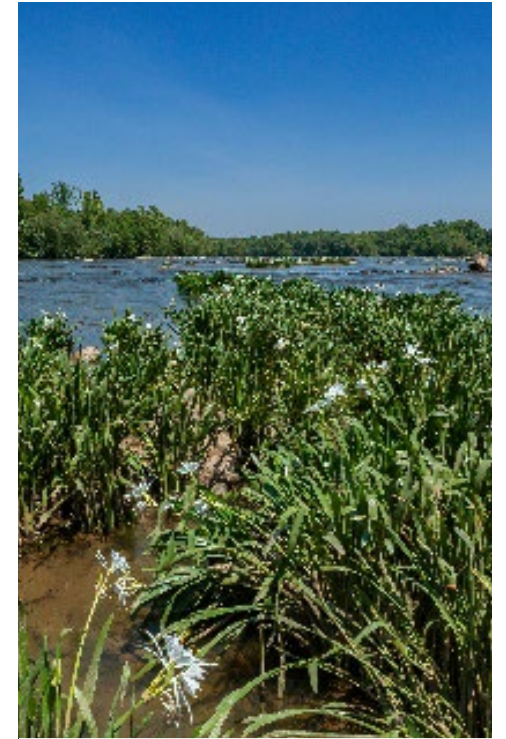
Waste assimilation



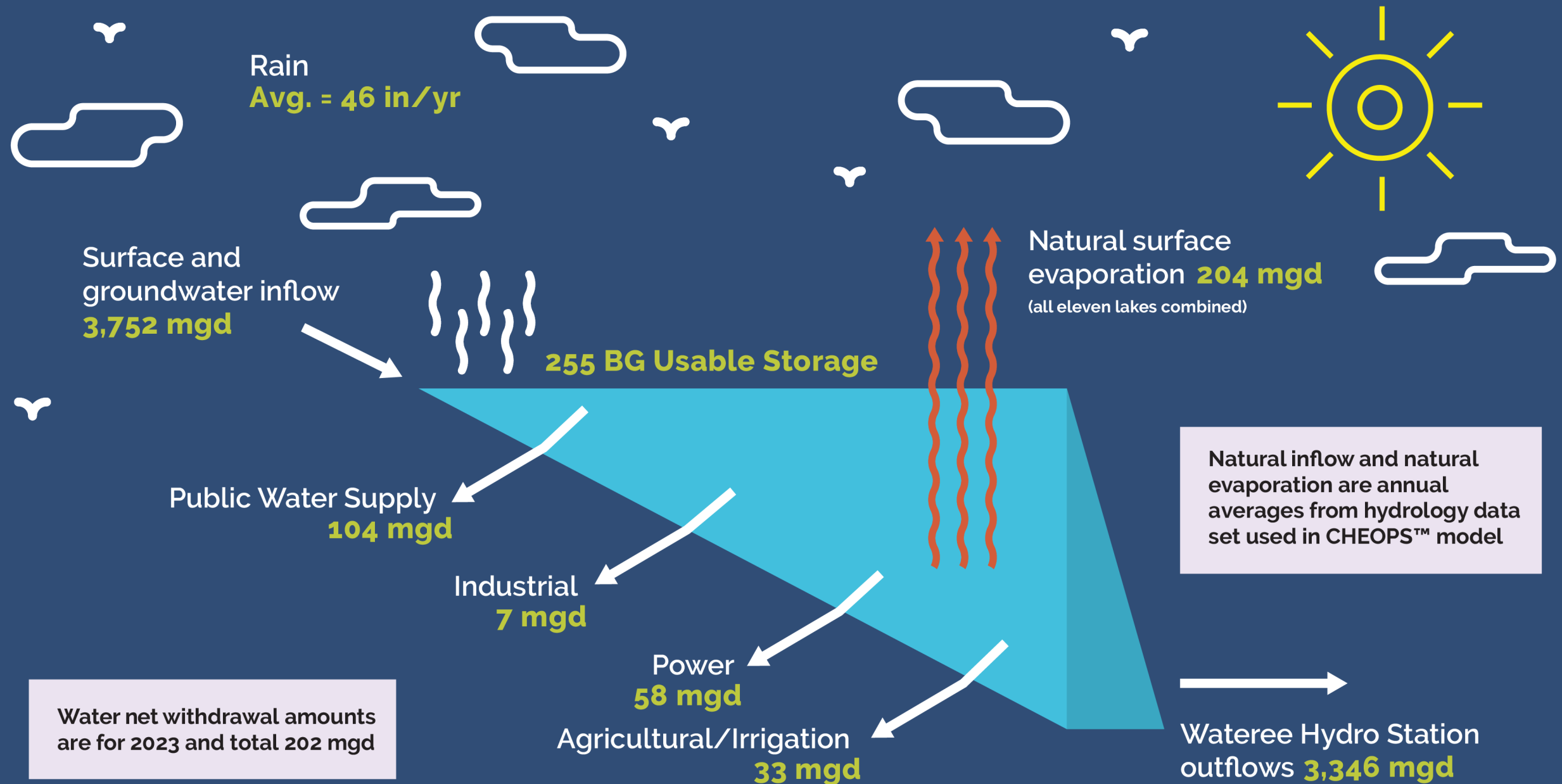
Agriculture



Recreation



Environment



15
14
13
12
11
10
9
8
7
6
5
4
3

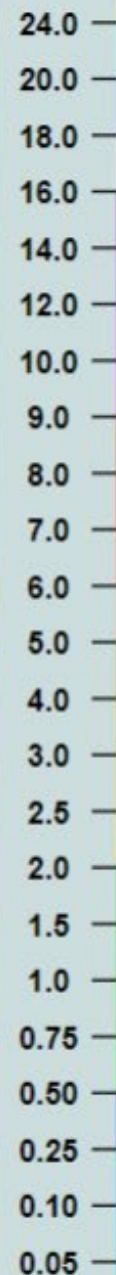
Map Center: -81.894, 35.294

Q3 Multi-Sensor [Pass 2] - 72 hr

09/27/2024 18:00 UTC

Tuesday 2pm
to Friday 2pm

in



NWS 72-hr Radar Estimated Rainfall – 2PM 9/24/24 – 2 PM 9/27/24

Lake Levels Around Hurricane Helene

(feet relative to full pond, with full pond = 100.0 ft)



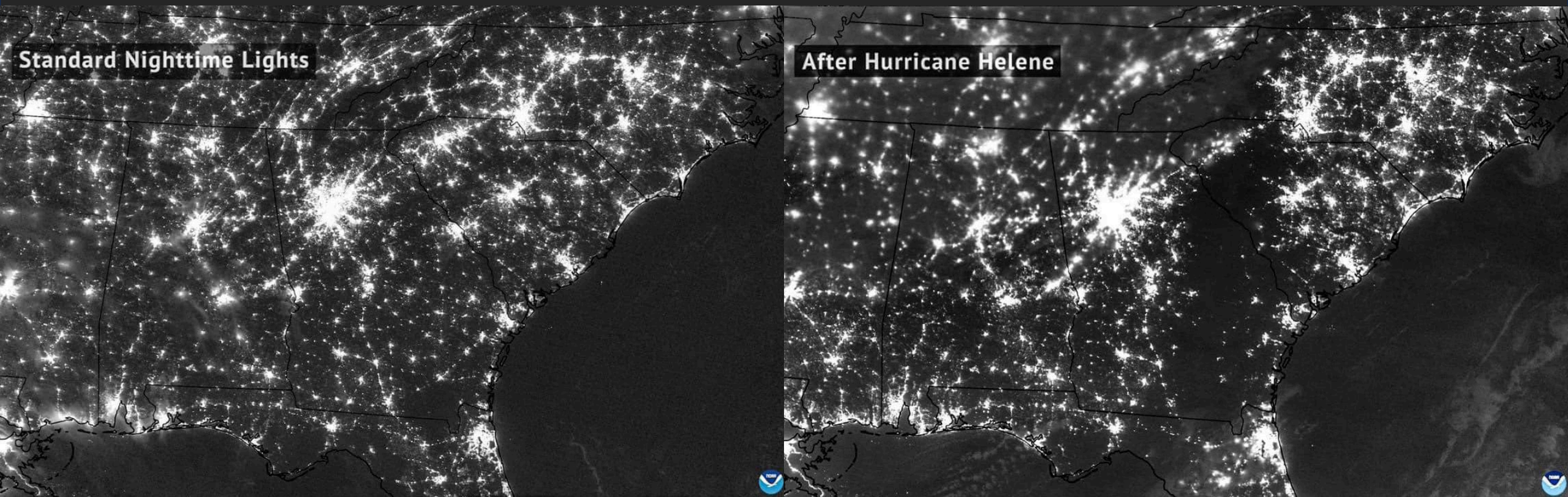
Lake*	Target Elevation 9/27/24	Level Reached Prior to Helene Inflow	Crest Level from Helene
James**	98	95.9	110.7***
Rhodhiss	97	93.9	109.6
Hickory	97	96.5	100.1
Lookout Shoals	97	95.7	109.5
Norman	97.5	97.0	100.1
Mtn Island	96	95.8	107.9

Lake	Target Elevation	Level Reached Prior to Helene Inflow	Crest Level from Helene
Wylie	97	96.3	100.0
Fishing Creek	98	95.7	100.15
Great Falls	97.5	96.9	100.0
Cedar Creek	97.5	96.3	106.6***
Wateree	97.5	96.8	106.0

* Red = Overflow spillway, Blue = Flood gates, Green = Pneumatic gates and overflow spillway, Purple = Flood gates and overflow spillway

** Lake level readings taken manually beginning 9/27/24 at 0700

*** All-time record





Ripple Effects

Water for All Summit

